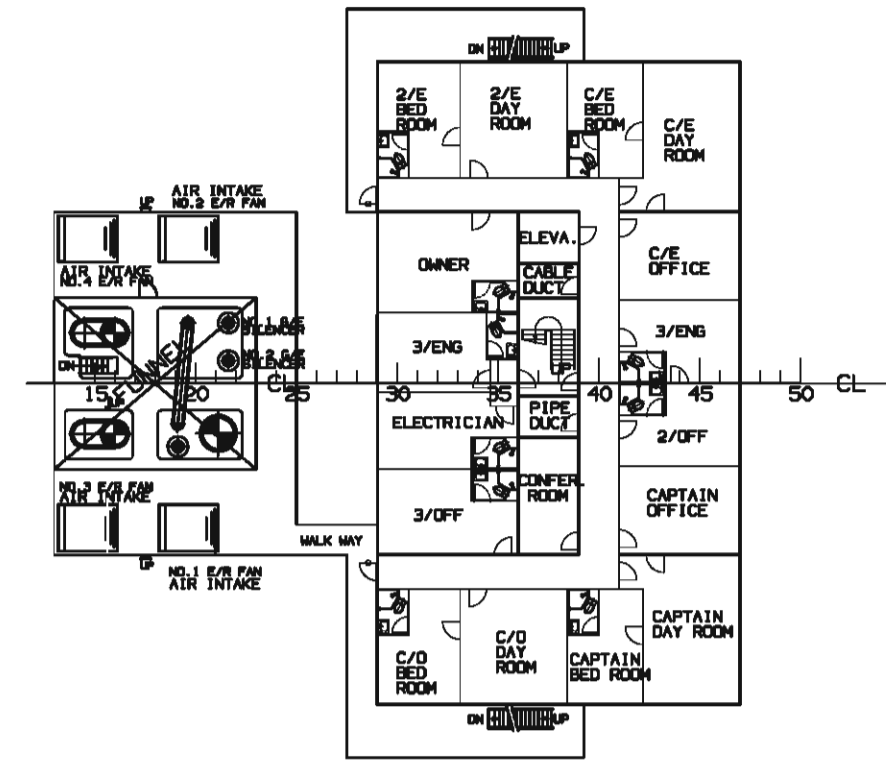


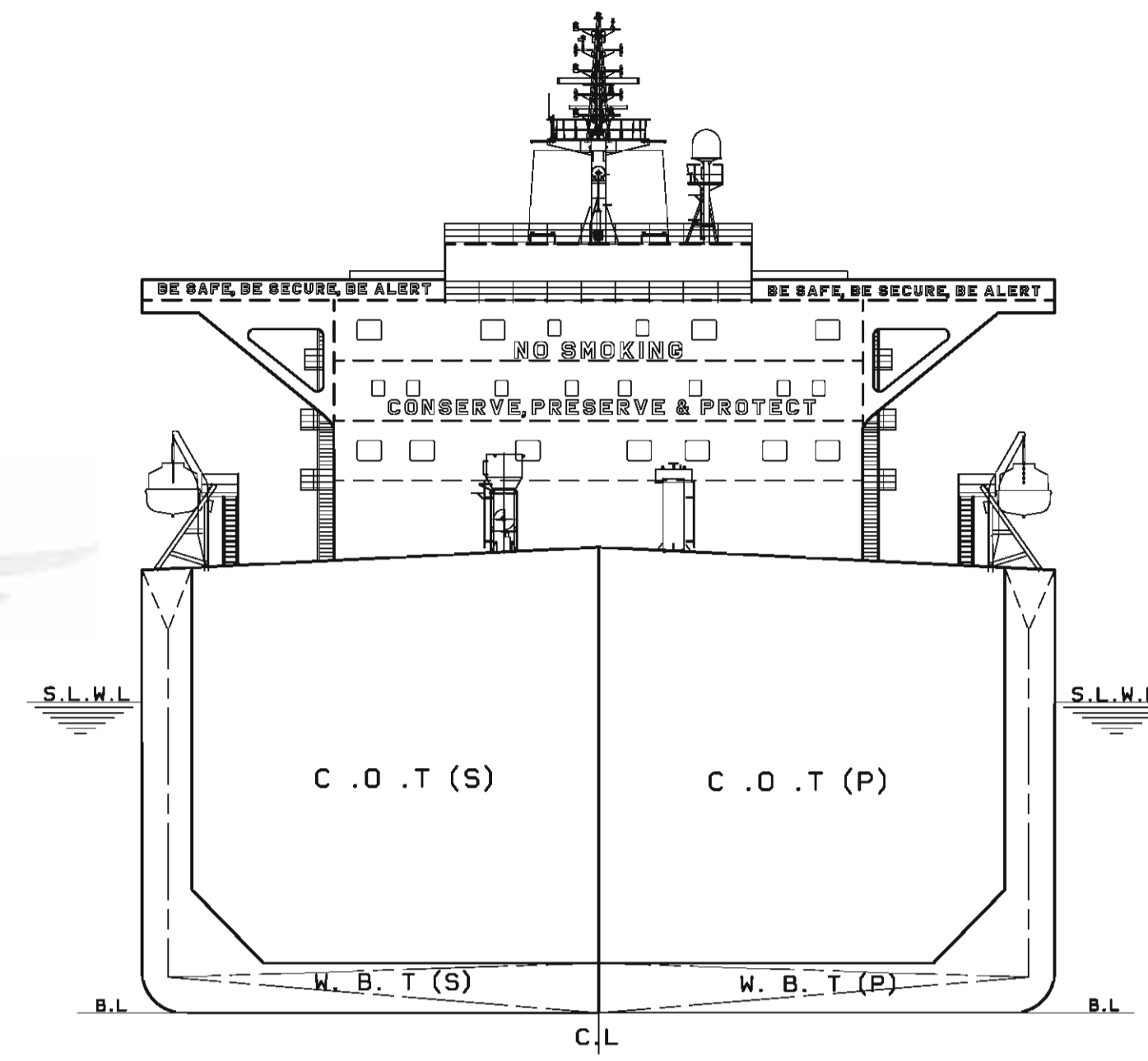
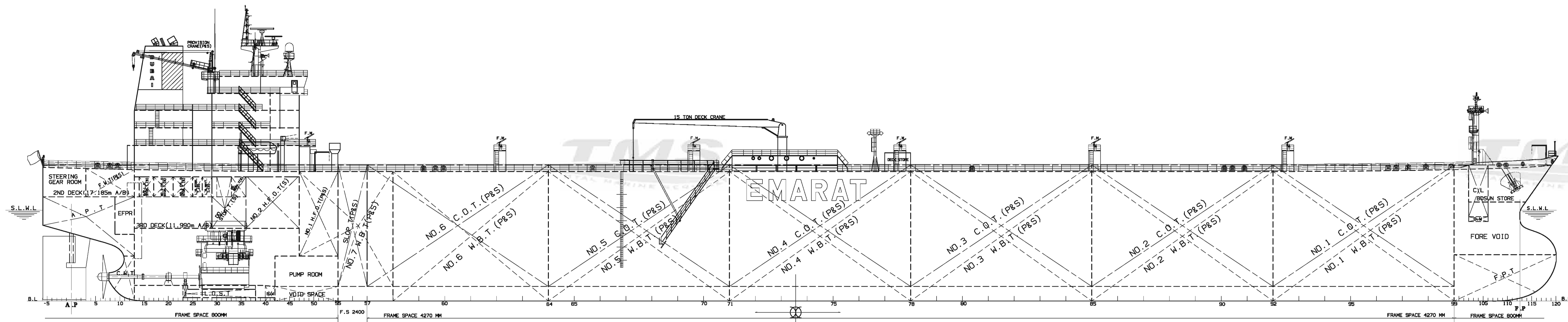
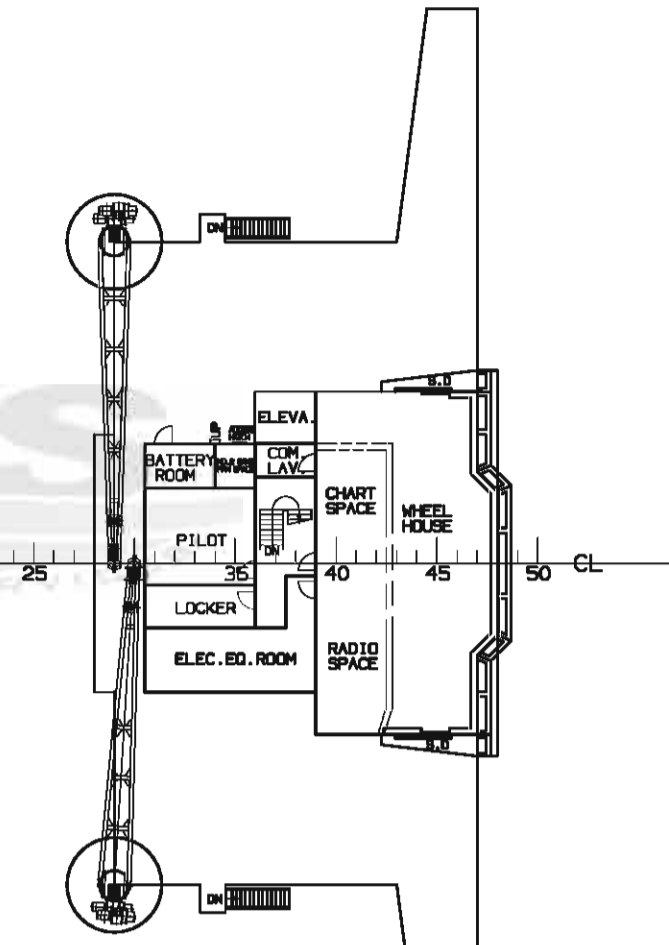
# DWT 115,000MT CRUDE OIL TANKER

## BIBLIOGRAPHY

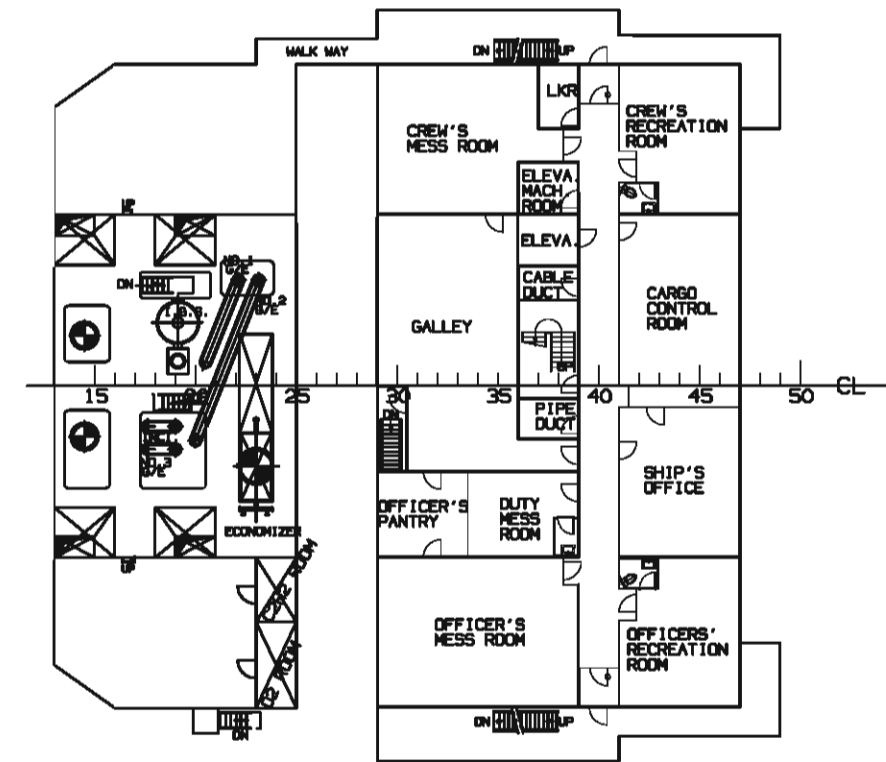
C DECK PLAN



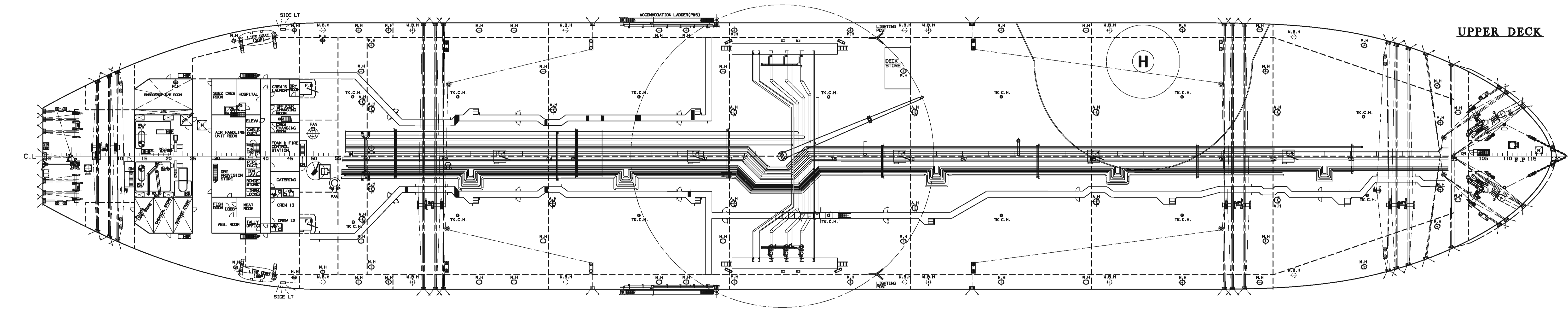
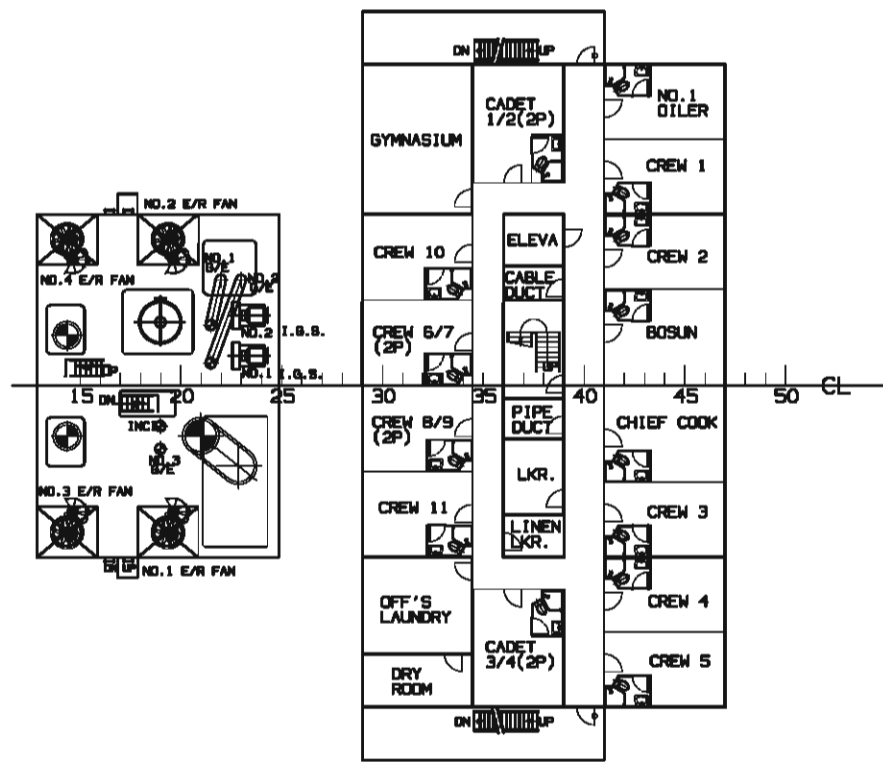
NAV. BRI DECK PLAN



A DECK PLAN

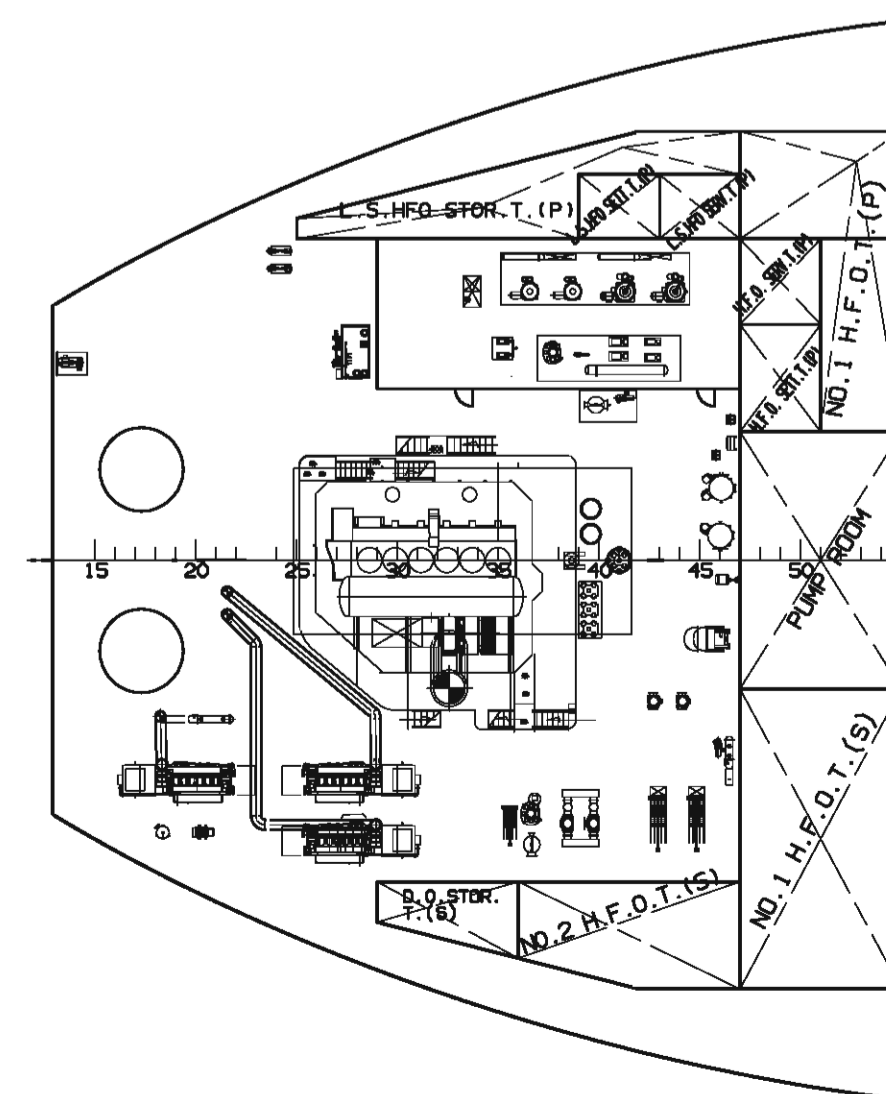


B DECK PLAN

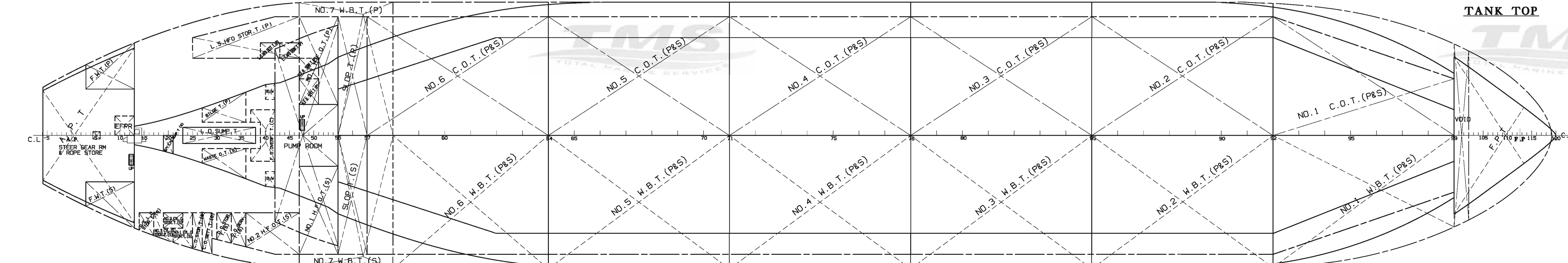
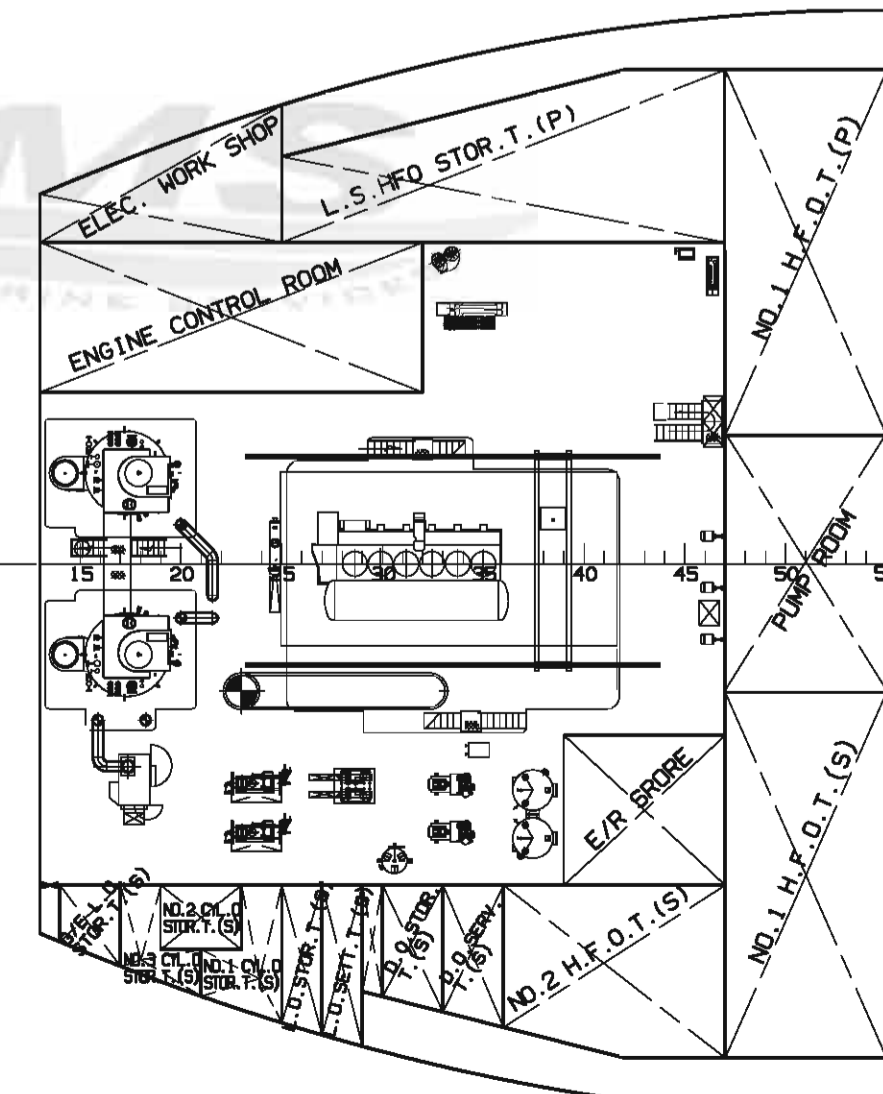


**" WARNING "**  
 This document is the sole property of Hanjin Heavy Industries & Construction Co. LTD.  
 Must not be copied or used in any way of without their express permission and scrap immediately when allowed purpose is completed.  
 HANJIN HEAVY INDUSTRIES & CONSTRUCTION CO., LTD.

E/R 3RD DECK



E/R 2ND DECK



## PRINCIPAL PARTICULARS

LENGTH O. A. : 250.00 m  
 LENGTH B. P. : 239.00 m  
 BREADTH (MLD) : 44.00 m  
 DEPTH (MLD) : 21.35 m  
 DESIGN DRAFT (MLD) : 13.60 m  
 SUMMER LOAD DRAFT (EXT) : 14.986m  
 MAIN ENGINE  
 TYPE : MAN-B&W 6S60MC-C  
 MCR : 13,560kW(18,420PS) X 105.0 RPM  
 NCR : 12,204kW(16,578PS) X 101.4 RPM  
 SERVICE SPEED ON DESIGN DRAFT  
 AT NCR WITH 15% S.M. : 15.00 KTS  
 CLASSIFICATION ABS  
 NOTATION FOR N200/N201/N210/N211  
 : ABS +A1 (E) "OIL CARRIER" CSR, AB-CM, +AMS, +ACCU  
 RM, WITH THE DESCRIPTIVE NOTES OF ESP, UWILD  
 COMPLIMENT : 32 PERSONS

IMO SHIP IDENTIFICATION NUMBER		9402495	
APP BY	J. Y. PARK	DATE	MAY 19, 2010
APP BY	H. D. KIM	SCALE	1/300
CHK BY	B. J. KIM	TITLE	DWT 115,000 MT CRUDE OIL TANKER
DWN BY	S. Y. HA	GENERAL ARRANGEMENT	
TEL NO	410-3453	"DUBAI CHARM"	

HANJIN HEAVY INDUSTRIES & CONSTRUCTION CO., LTD.